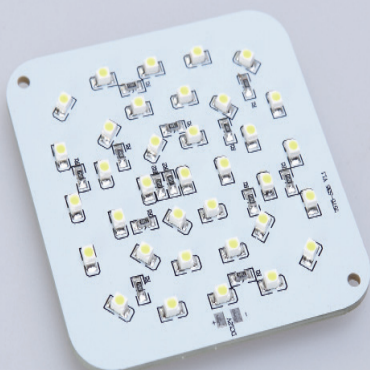




2023

RvP Light & Metall

Manufacturing and trading of lighting systems
and metal components



QUALITY

COMPETENCE

FLEXIBILITY

Our philosophy “Individually according to customer requirements” reflects the flexibility in development and production of customer-oriented products in the segment of lighting, electrical components for lighting systems and metal parts.

This competence is based on the one hand on our specially trained employees and on the other hand on our vertical integration.

The specialization of RvP makes it possible to implement complex and extensive product requirements quickly and professionally.

The comprehensive implementation of production segments and manufacturing processes in the RvP company guarantees high manufacturing flexibility with very short delivery times and an optimal basis for calculation to realize a competitive pricing.



COMPANY, PRODUCTS, PRODUCTION

RvP combines extensive manufacturing options, manufacturing processes and quality assurance systems in one company...

- Manufacture and assembly of lighting systems
- in-house cable production
- in-house powder coating
- ESD protected assembly area (EPA)
- State of the art machinery for sheet metal production
- Production of welded assemblies
- 3D CAD-supported construction
- Rapid Prototyping
- Light Laboratory

View Product webpage

<https://rvp.de/rvpproducts.php>



led luminaires

- **Lighting and lighting components**
- **in-house cable assembly**
- **electrical components**
(extensive assortment of connector systems and LED light sources)
- **Control technology (LED dimmer, CCT and RGB controls etc.)**
- **Photometric measurements in the in-house light laboratory**
- **Consulting for individual lighting concepts and planning**



Recessed luminaires



Mounted luminaires



Linear lights / LED profile luminaires



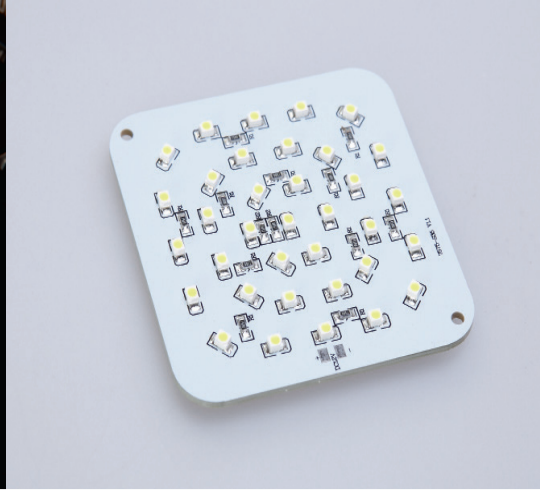
Customized LED luminaires

led modules

The RvP portfolio includes a very extensive range of LED modules and LED PCBs. In addition RvP can develop and produce LED PCBs with all specifics which are required by our customers.

Typical specifications for LED modules are:

- Flexible LED strips or rigid LED boards
- Light color / CCT
- Power consumption
- Operating voltage and LED-Chip current
- Luminous flux (Lumens)
- Layout / Assembly
- Color rendering (CRI / Qf, Qg)
- Degree of protection (IP)
- and much more



LED Stripes

Flexible use with optimized properties of the light source

- » cuttable as required
- » Luminous flux definable
- » Light color definable
- » Assembly density definable

LED PCBs (Rigid)

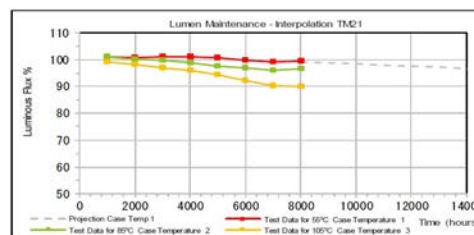
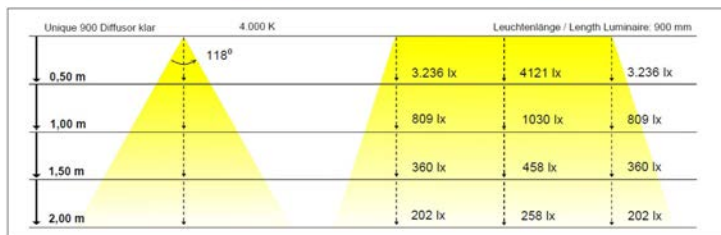
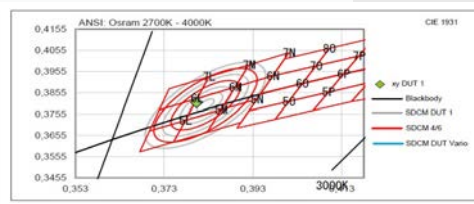
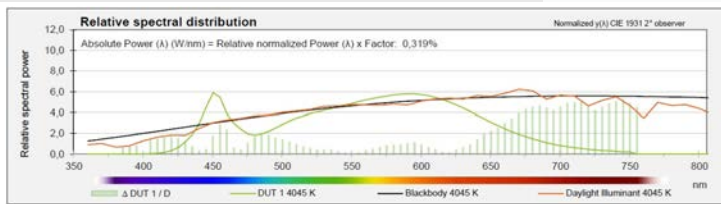
Customized LED Light sources

- » variable pcb layout and design
- » variable mountable LED-Chip types

LED module-chains

Homogeneous illumination and backlighting of advertising displays, showcases and architectural light installation

- » user-friendly assembly at the installation site



Quality assurance through in-house light measurement



ESD-sensitive components such as LED PCBs or electrical components are processed in a protected ESD area (EPA) in accordance with EN 61340

led profiles

RvP offers a very extensive standard range of LED profiles.

You can view and download our catalog “RvP LED Profile” and “LED Silicone Tubes” directly with the following link...

<https://rvp.de/assets/pdf/Katalog-Flyer/RvP-Kataloge/RvP-LED-Profiles-2023.pdf>

https://rvp.de/assets/pdf/Katalog-Flyer/RvP-Kataloge/RvP-LED-Silicone-Tubes_2023.pdf

In addition, RvP has a broad portfolio of suppliers, which give the possibility to deliver led profiles for nearly every application.

RvP also offers CAD-supported construction and manufacturing of customer-specific extruded profiles.



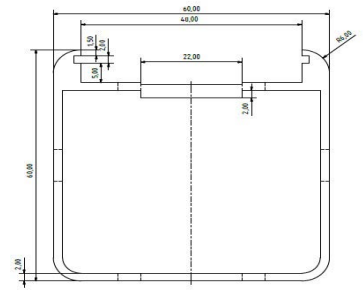
Recessed

Flush installation of led light profiles for furniture and shop-in-shop systems



Surface

Easy installation of LED light profiles by using mounting brackets or magnetic mounting systems



Customized

RvP realize CAD-supported construction and manufacturing of customer-specific extruded profiles



Thanks to in-house production RvP offers LED profile lights that are completely made to customers measurement-requirements and which are ready for connection



power supplies controller

RvP offers a wide range of LED power supplies and led controller of various designs and brands.

On request the best suitable control gear or led controll-system for the specific customer application will be selected from the wide range of deliverable products.

RvP produces fully assembled lighting systems with supply lines, connection cables, distributors through in-house cable production.

Possible Control technology (LED driver including Controler/ Control interface or separate LED controller):

- PWM
- DMX
- PIR sensor
- IR sensor
- Capacitive Control
- Radio remote control or fixed apparatus
- App-Controlled (Casambi)
- Dali
- 0-10V / 1-10V interface
- and much more

LED Power supplies

Typical specifications for LED power supplies are:

- Constant voltage 12 VDC or 24 VDC
- Constant current 350 mA / 700 mA / 1050 mA
- Power 3 Watt to 300 Watt



LED controller

Possible variants of LED lighting controls are:

- Switching
- Dimming
- Color change (CCT / Cool white - warm white)
- RGB (color mixture of red, green and blue)



CAD construction 3D printed parts metal constructions

Development & Construction

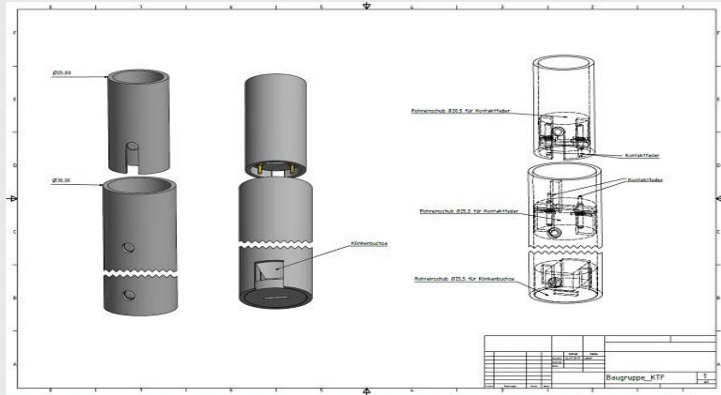
3D-CAD/CAM supported production of metal parts and assemblies.

From design to series production...

- individually
- quickly
- cost-effectively

CAD Construction

- on the basis of available customer data or CAD construction by RvP
- customized products and systems in metall and plastic (usually PLA)
- used formats: .step, .ipt, .iges, .dwg, .gcode, .stl, and more



3D printed parts / Metal Constructions

- Metal components and metal assemblies
- CAD/CAM supported design and production
- Rapid prototyping using 3D printing
- Welded components
- from the individual part to the fully assembled function module
- in-house powder coating
- Metal components with or without illumination/electrification



© RvP Rudolf von Prusky GmbH 2023

Fertigung und Vertrieb

Heidfeld 2

33142 Büren

Tel.: +49 (0)2951 9900-0

Fax: +49 (0)2951 9900-99

E-Mail: info@rvp.de

Web: <https://rvp.de>

Sitz des Unternehmens

Goethestr. 8, 33330 Gütersloh

Geschäftsführer: Rudolf von Prusky, Heike von Prusky-Sentker, Peter Vorst